

Term 4 Week 9



Hamilton
Seventh-day Adventist School
Educating For Eternity

VOL. 19, 2025

Friday, 5th December
Rāmere, 5 Tihema

The Rat Returns NEXT WEEK

We have less than a week to go before our kids take the stage at our school Production, The Rat Returns. With only a week remaining, we have only sold a third of the tickets and we need you to help us sell out the Clarence Street Theatre... TWICE!

That's right, the Production takes place next week over two nights, and we would love to see as many people as possible there, to see our students retell the story of the Prodigal son through a family of farm rats.

When: 10th & 11th December

Time: 6.30 pm (Kids need to be dropped off by 5 pm)

Venue: Clarence Street Theatre, a short walk from Hamilton Central SDA Church.

Be sure to click on the link below to purchase your tickets:

<https://premier.ticketek.co.nz/shows/show.aspx?sh=RETURNS25>

Tickets will be available for purchase at the door on the night as well.

Also, on **Tuesday & Wednesday next week**, students will need to be dropped off at the Clarence Street Theatre at 9 am and picked up again from 2.50 pm.

On **Thursday**, kids will be **back at school**, however, if they are tired, please let them sleep in and be in at school by 10am instead of 9am.

More information regarding next week can be found in this newsletter on pages 4 & 5.

Please note too that Parking at Pak n Save on the night will result in a \$85 fine. You can drop the kids off at the designated drop-off zone, however, you will need to park elsewhere. The Knox street car park building is a 5-10 min walk from the theatre, there is also parking available at Hamilton SDA Central Church on Palmerston Street.

As we finish off the school year, I would like to express my gratitude for your support and for your trust in me and in our staff team.

"May the Lord Bless and Keep you, the Lord make his face shine upon you and be gracious to you, and give you peace".

Shaun Hurlow

principal@hamsda.school.nz

**WE NEED
YOU!**

Karakia

Over the next two weeks we will be praying for the following families

Prayer	Term 4	
	Week 10	Week 11
Rāhina	King	Males Solis
Rātū	Knox	Malo
Rāapa	Kondrote	Mariam Prince
Rāpare	Lakua	Matozo Quimelli
Rāmere	Lum	

Our Deep Hope

Our students will encounter the heart of God, as they walk in a growing relationship with Him and with others, that inspires them to make a positive impact for His Kingdom

WWW.HAMSDA.SCHOOL.NZ

Field Hockey Team Undefeated

The year 5/6 HAMSDA field hockey team finished their term of summer hockey undefeated. They represented the school well showing great sportsmanship, positivity and teamwork.



Inline Hockey Teams Grow

This term, we fielded three inline hockey teams across three grades. SDA Rockets played in the PeeWee league, SDA Blades played in Division 4, and SDA Hotshots played in Division 3. It was great to see how all of our teams grew in their skill levels and confidence, competing well in their difference grades.



Futsal Teams Progress

This term, we had two Futsal teams competing in the WaiBop Futsal League. Our U9 team, many who have never played Futsal before, made so much progress this year.

Our U13 team have grown to another level, playing beautiful football, attacking with great speed and defending courageously as a unit.

A Big Thank You to all of our Parent Helpers who have entered teams and manage our teams in their various sports and competitions. Thank you for your support and encouragement of our teams.



*"And we all, who with unveiled faces contemplate the Lord's glory, are being transformed into his image with ever-increasing glory, which comes from the Lord, through the Spirit.
2 Corinthians 3:18"*





Praying for Families

Every morning, our staff team pray for a family in our school community. We invite you to join us in praying for families listed on the front of the newsletter.

If it is your families turn for prayer and you have a specific prayer request, please email your request to the school office and we pray specifically for it.



Attendance Dues Increase

In 2026, Attendance Dues will increase to \$660 per person (\$30 increase). This increase is due to the rising cost associated with inflation in order to keep up with the maintenance of our school buildings.



Weet-bix Try-Athlon

When: This Sunday, 7th December

Where: St. Peter's School, Cambridge

Time: 7am - 8.15am (Bikes and gear in transition area)
9am - Races start

Race backs can be picked up at Registration on Sunday morning.



School Production

When: Wed & Thurs, 10th & 11th December

Where: Clarence Street Theatre, 59 Clarence Street

Time: 6.30 pm (*Kids need to be there by 5 pm*)

Cost: \$29.99 per person (*Our School kids don't need to buy tickets*)

To order [tickets](https://premier.ticketek.co.nz/shows/show.aspx?sh=RETURNS25), go to:

<https://premier.ticketek.co.nz/shows/show.aspx?sh=RETURNS25>

Praise Giving

Praise Giving

When: Wednesday, 17th December

Year 0 - 4: 1.45 pm at School

Year 5 - 8: 6.00 pm at Hamilton Central SDA Church (58 Palmerston Street, Hamilton Central)

Dress: Formal School Uniform

Please come along and join us as we farewell our Year 8s and celebrate the students and their learning progress.

“Poipoia te kakano Kia puawai”

Nurture the seed and it will blossom





HAMILTON ADVENTIST SCHOOL GOBSMACKED SHOW WEEK DETAILS

MONDAY DECEMBER 8

Full Gobsmacked rehearsals at school without costumes and make-up

TUESDAY DECEMBER 9

(Both existing bus runs will transport students to and from Clarence Street Theatre)

8:50am Students arrive at Clarence Street Theatre. (Side entrance as indicated on the map attached)

(Lead roles have different arrangements - they need to be at the theatre at 8am)

9:00am Combined Worship and students allocated to spaces

9:30am-2:40pm Full Gobsmacked technical rehearsals at the centre.

2.50pm Student can be picked from Clarence Street Theatre (Side entrance as indicated on the map attached)

3:15pm All students need to be picked-up (After School supervision until 3.30 pm when Cambridge bus leaves)

Students will need:

- o a packed 'mess free' morning tea and lunch, water bottle, zip-up jumper or fleece to wear over base costume
- o NB: no make up required today

WEDNESDAY DECEMBER 10

(Both existing bus runs will transport students to and from Clarence Street Theatre)

8:50am Students arrive at Clarence Street Theatre. (Side entrance as indicated on the map attached)

(Lead roles have different arrangements - they need to be at the theatre at 8am)

9:00am Combined Worship and students allocated to spaces

9:30am-2:40pm Full Gobsmacked technical rehearsals at the centre.

2.50pm Students can be picked from Clarence Street Theatre (Side entrance as indicated on the map attached)

3:15pm All students need to be picked-up (After School supervision until 3.30 pm when Cambridge bus leaves)

Students will need:

- o a packed 'mess free' morning tea and lunch, water bottle, zip-up jumper or fleece to wear over base costume
- o NB: no make up required today

5:00pm Drop students at the back entrance of the Clarence Street theatre (please bring your child in full make-up - communal make-up will be provided for those that need it at the venue). Professional photos will be taken of your children in full costume.

6:30 - 8:00pm - First performance: Door sales will be available. No recording or filming please - We will be filming it for you.

All children will need to be picked up from the stage at the end of the performance after changing out of their costumes.

THURSDAY DECEMBER 11

9.00am - 10.00am Students may sleep in this morning but please **drop them at school** by 10.00am.

2.55pm Normal pick-up from school

5:00pm Drop students at the back entrance of the Clarence Street theatre (please bring your child in full make-up - communal make-up will be provided for those that need it at the venue). Professional photos will be taken of your children in full costume.

6:30 - 8:00pm - Second performance: Door sales will be available. No recording or filming please - We will be filming it for you.

All children will need to be picked up from the stage at the end of the performance after changing out of their costumes.

Pick up instructions:

After the show students will change in their dressing rooms. This will take 10-15 minutes. Students will then **return to the stage** as a class where they can be **signed-out and picked up** by their parents/caregivers.

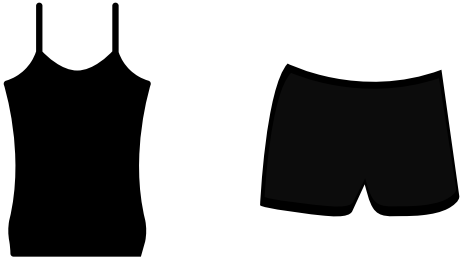
COSTUME INFORMATION

All costumes are provided

Footwear: To be worn to and from venue. all scenes will see the kids performing bare foot.

All students for privacy reasons can choose to wear a black, white or skin coloured shoestring singlet and bike shorts underneath their costumes to make it easier to get changed.

There are no individual changing rooms.



MALE CHARACTERS:

Makeup

- foundation
- mascara
- eyeliner
- blusher
- COLOURSTAY brown lipstick

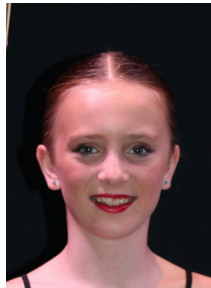


HAIR AND MAKEUP

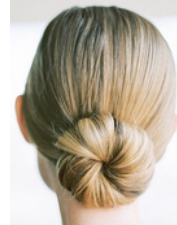
Due to the bright stage lighting all students are requested to wear stage make up.

We encourage make up to be applied at home before coming to the theatre on Wednesday and Thursday night before each show. Please follow the instructions below:

Please note that we will have hairspray and communal makeup for those students who need their makeup done or touched up.



FEMALE CHARACTERS:



Makeup

- foundation
- mascara
- eyeliner
- blusher
- COLOURSTAY red or deep pink lipstick

Long hair is best tied up into a neat low bun.
Short hair to be tidy, sprayed back if that works.

To find out how to apply the makeup go to

<https://www.gobsmaeked.nz/howto>

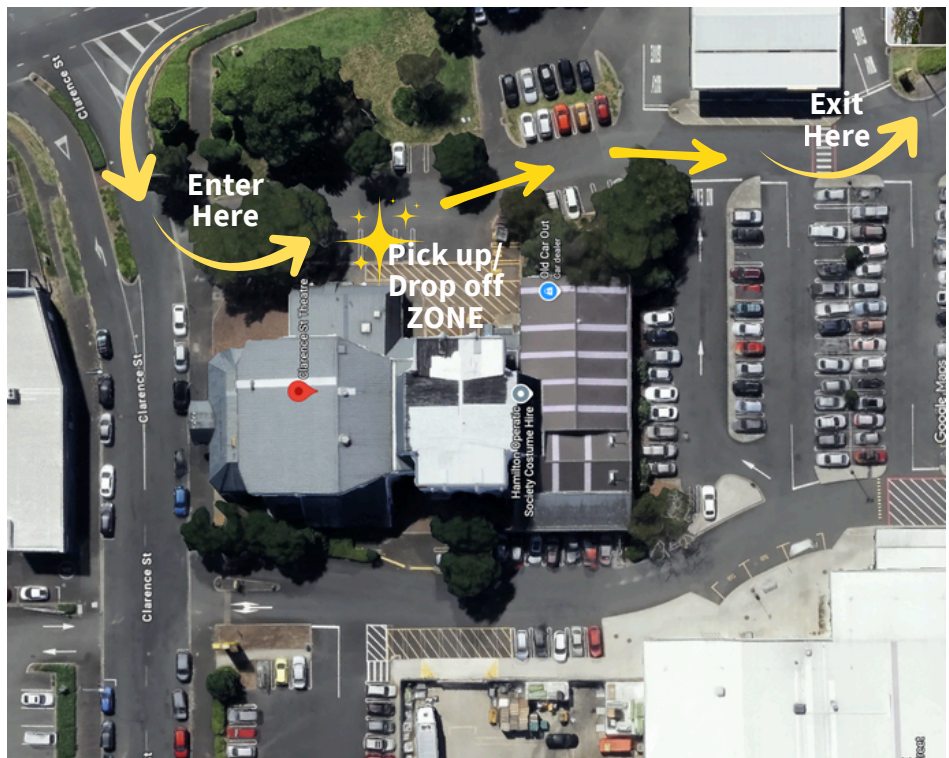
CLARENCE STREET THEATRE

59 Clarence Street, Hamilton Lake



When dropping students off or picking them up in the afternoon, please turn into the Clarence Street Theatre Parking Area and come to the zone indicated on the map below. You will need to sign your child in at drop-off and sign them out again at pick-up time.

On the evening of the Production, please don't park in the Pak n Save car park. Those are only 120 minute dedicated parks and are for customers only. They are well monitored so parking there may result in a parking infringement or fine.



There are a number of car parks available at the Hamilton Seventh-day Adventist Church next to Pak n save. See parking area circled in yellow.

There are parking buildings within walking distance of Clarence Street theatre.

WE LOOK FORWARD TO SEEING YOU THERE!

Displaying Our Values

Scan QR to Purchase Tickets
for The Rat Returns



RESPECT. RESPONSIBILITY. RESILIENCE.

Important Dates

Coming up in Term 4

Sun, 7 th Dec	Weet-Bix Try-Athlon - St Peters, Cambridge, Click HERE to enter
Tues & Wed, 9 th & 10 th Dec	Production Practice @ Clarence Street Theatre - 59 Clarence Street, Hamilton (All kids dropped off between 8.30 - 9.00 am & Picked up between 3.00 - 3.30 pm)
Wed , 10 th Dec	School Production - 6.30 pm @ Clarence Street Theatre (Students arrive by 5.00 pm)
Thur, 11 th Dec	School Production - 6.30 pm @ Clarence Street Theatre (Students arrive by 5.00 pm)
Fri, 12 th Dec	Room 4 - Te Awamutu Pools (Roaming Patrol End-of-Year Celebration)
Wed, 17 th Dec, Praise Giving	Year 0 - 4: 1.45pm at School
	Year 5 - 8: 6.00pm at Hamilton Central Church (58 Palmerston Street, Hamilton Central)
Thurs, 18 th Dec	Last Day of the School Year
Tues, 3 rd Feb 2026	New School Year Begins

Phone: 07 856 4417

Email: office@hamsda.school.nz

Address: 46 Annebrook Rd, RD3, Hamilton 3283

Website: www.hamsda.school.nz

